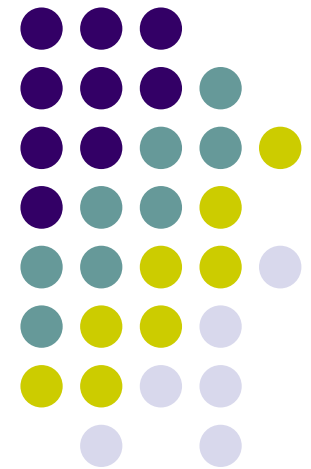
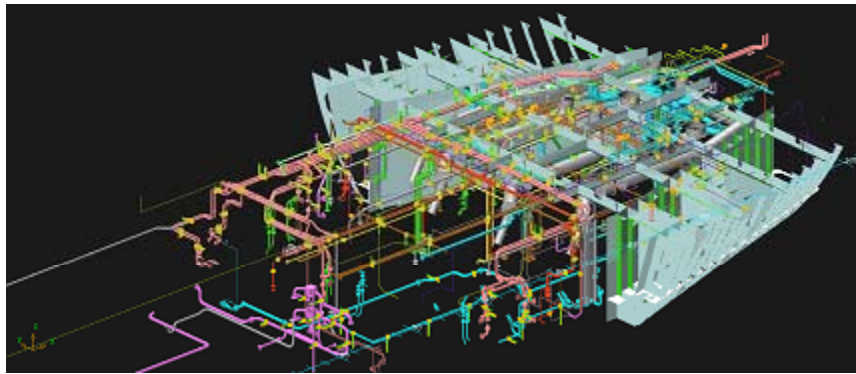


# Detail Engineering Projects Executed

Prepared by – Akshay Jain, Naval Architect  
Rakesh Roy, Naval Architect



**VEDAM DESIGN & TECHNICAL CONSULTANCY PVT. LTD.**

505, Acropolis, Military Road,  
Marol, Andheri (E),  
Mumbai-59, INDIA

Phone: +91-22-67109192  
E-mail: [vedam@vedamindia.com](mailto:vedam@vedamindia.com)  
Web: [www.vedamindia.com](http://www.vedamindia.com)

Dated – 1 Aug 09



# 92M Seismic Research Vessel

## Vessel Particulars

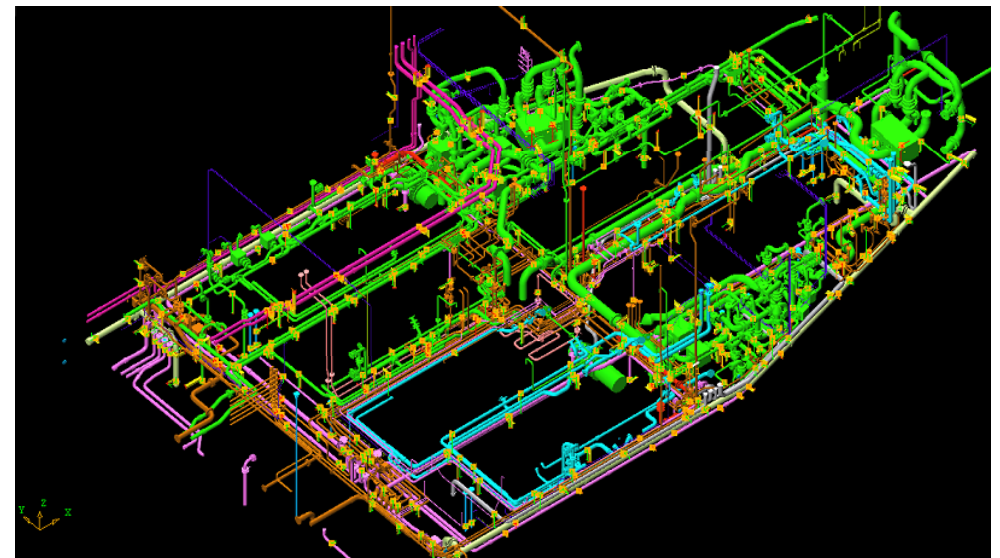
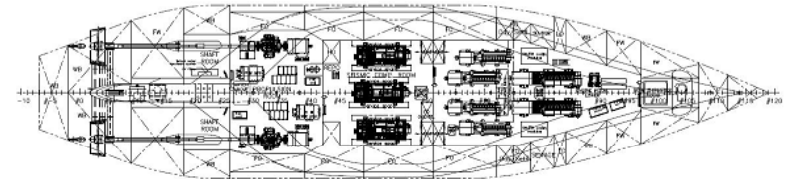
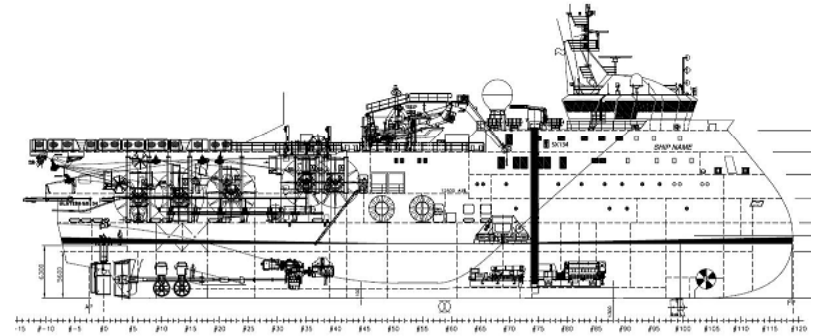
- LOA – 92 M
- Breadth – 21 M
- Dept – 9.0 M
- Draught – 7.5 M

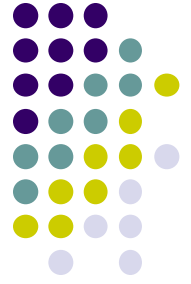
## Shipyard –

Drydocks World Dubai, UAE

## Team –

- Naval Architect - 2
- Piping – 22 Designers
- Structural – 3 Designers





# 92M Seismic Research Vessel

## Out put (Piping) –

- Spool Drawings & MTO
- Support Drawings & MTO
- General Arrangement
  - Penetration Details
  - Support Pad Details
  - Full GA
- Walkway Drawings
  - Fabrication Drawings
  - Legs Pad GA
  - Arrangement Drawings
- Drip Tray Drawings

## Total Number of Parts –

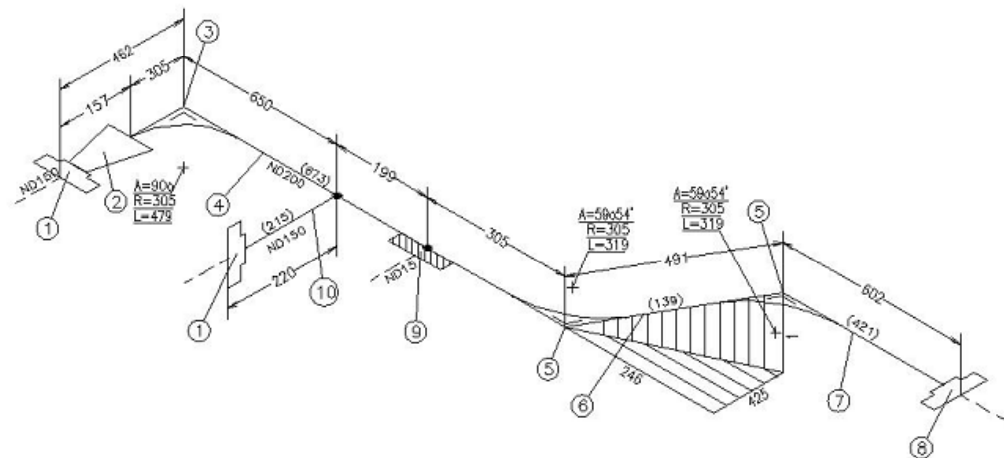
### Spools –

- Number – **11,300 pcs**
- Weight - **136 Tons**

### Supports –

- Number – **1,700 pcs**
- Weight – **12 Tons**

GA Sheets - **160 pages**

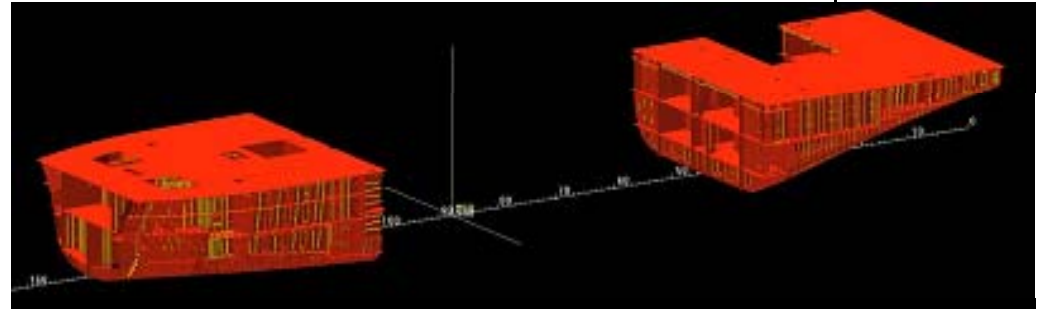




# 105M Platform Supply Vessel

## Vessel Particulars

LOA – 105 M  
Breadth – 22 M  
Dept – 8.5 M  
Draught – 6.5 M

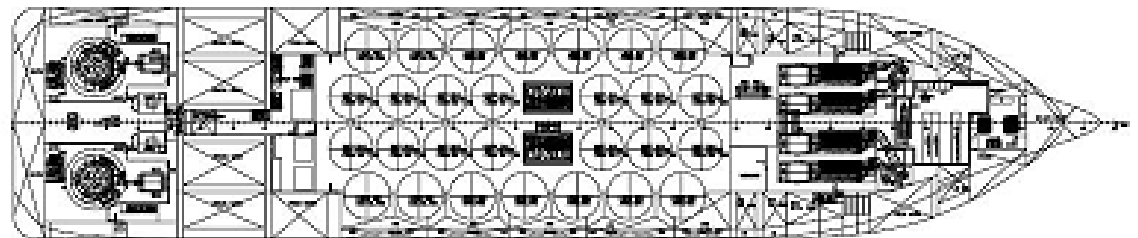
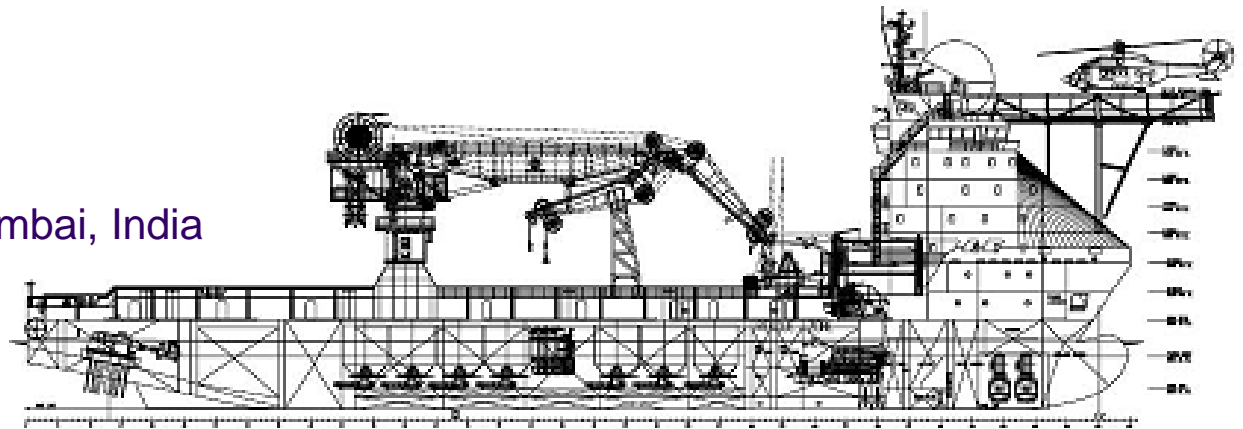


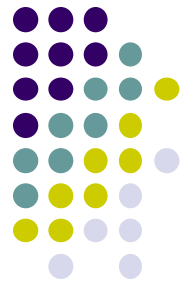
## Shipyard –

Bharati Shipyard Ltd, Mumbai, India

## Team –

Naval Architect - 2  
Structural – 7 Designers  
Piping – 8 Designers





# 105M Platform Supply Vessel

## Out put (Structural) –

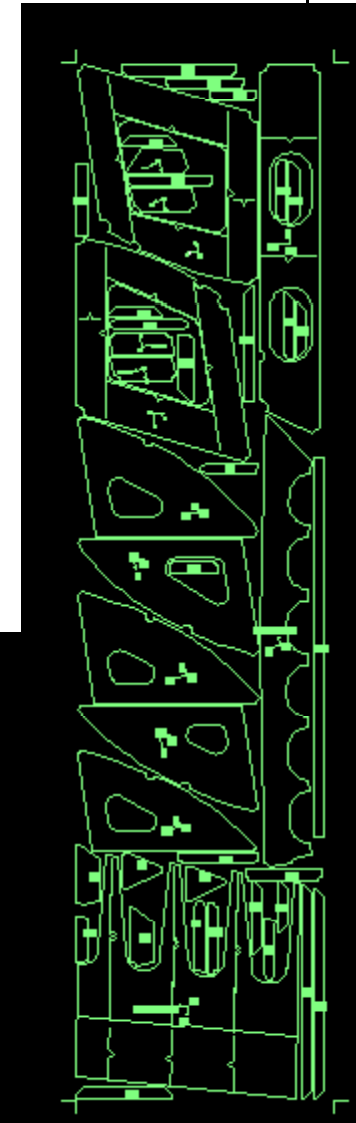
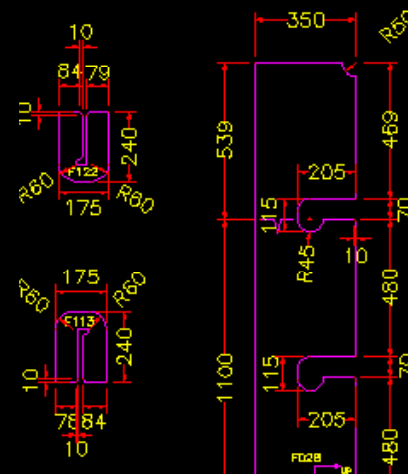
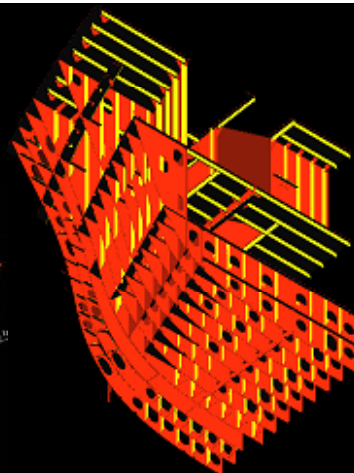
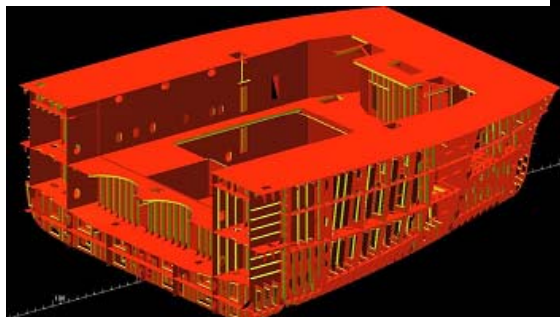
- Nesting Drawings
- NC code
- Manual Cutting Plan
- Marking Plan
- Shell Expansion
- Shell development Plan
- Body Section Plan

## Out put (Piping) –

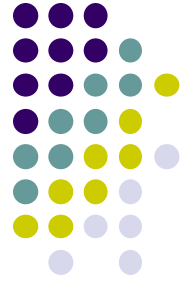
- Spool Drawings
- General Arrangement

## Total Number of Parts –

- Structural –  
Number - **15,000 pcs**  
Weight – **1200 Tons**
- Piping – In Progress



M08
G00X-600.0Y-
M07
G01X0.0Y-59.
G01X50.0Y-14
G01X-50.0Y-
G01X0.0Y-59.
M08
G00X-20.0Y21
M07
G01X0.0Y658.
G01X50.0Y40.
G01X-50.0Y40
G01X0.0Y658.
M08
G00X-300.0Y-
M07
G01X-479.5Y-
G01X-33.9Y-
G01X-45.6Y4!
G01X-479.5Y-
M08
G00X138.5Y6!
M07
G01X0.0Y137!
G01X-50.0Y40
G01X50.0Y40.
G01X0.0Y137!
M08
G00X-138.5Y!
M07
G01X1154.3Y!
G01X40.0Y-5!
G01X39.9Y50.
G01X1154.3Y!
M08
G00X-150.0Y-
M07
G01X0.0Y-36!
G01X50.0Y-4!
G01X-50.0Y-4
G01X0.0Y-36!



# Structural Projects

## PSV

### Vessel Particulars

LOA – 85 M  
Breadth – 16.6 M  
Dept – 7.8 M

### Shipyard –

Bharati Shipyard Ltd, Mumbai, India

### Scope –

- Shell Expansion Drawings
- Shell Development Plan
- Shell Plate Nesting Drawings

## 80T AHTS

### Vessel Particulars -

LOA – 65 M  
Breadth – 15.7 M  
Dept – 7.0 M

### Shipyard –

Bharati Shipyard Ltd, Mumbai, India

### Scope –

- Shell Expansion Drawings
- Shell Development Plan
- Shell Plate Nesting Drawings



# 275 Men Accommodation Barge

## Vessel Particulars

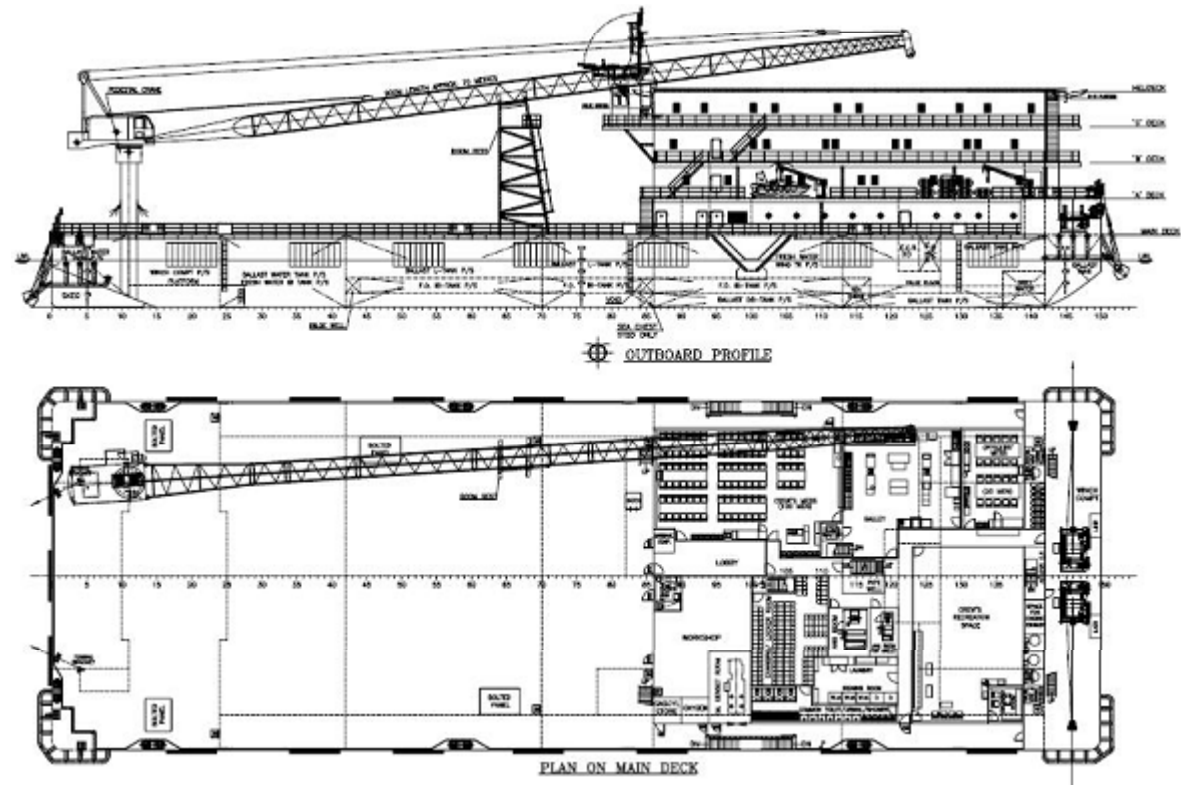
- LOA – 90 M
- Breadth – 30 M
- Dept – 6.1 M
- Draught – 4.0 M
- Complement – 275 Men

## Shipyard –

Shoft Shipyard, Mumbai,  
India

## Team –

- Naval Architect - 2
- Piping – 6 Designers
- Structural – 4 Designers





# 275 Men Accommodation Barge

## Out put (Piping) –

- Spool Drawings
- General Arrangement

## Out put (Cable Tray) –

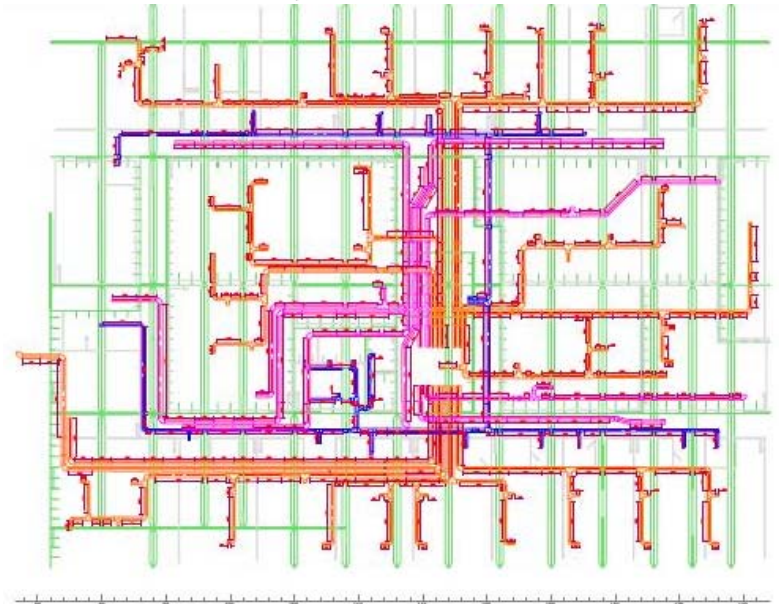
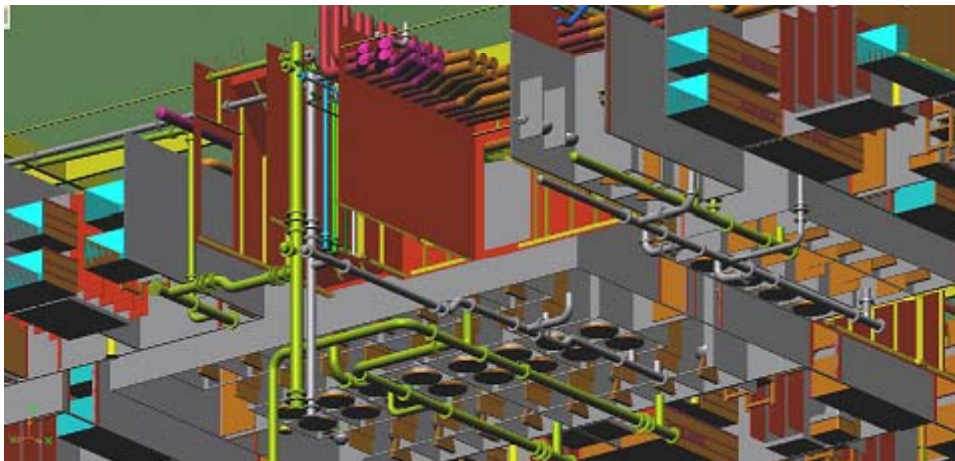
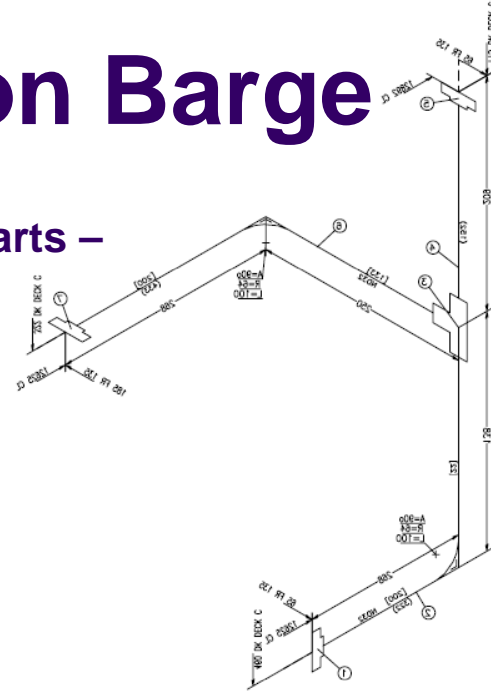
- General Arrangement

## Out put (HVAC) –

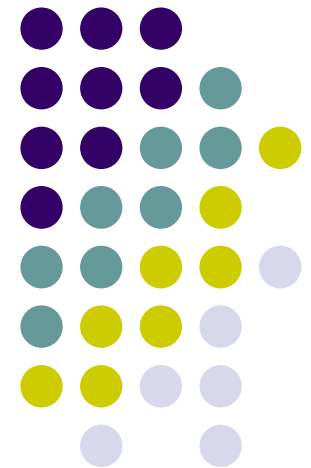
- General Arrangement

## Total Number of Parts –

- Spools – 800
- GA Sheets – 40



# THANK YOU



**VEDAM DESIGN & TECHNICAL CONSULTANCY PVT. LTD.**

505, Acropolis, Military Road,  
Marol, Andheri (E),  
Mumbai-72, INDIA

Phone: +91-22-67109192  
E-mail: [vedam@vedamindia.com](mailto:vedam@vedamindia.com)  
Web: [www.vedamindia.com](http://www.vedamindia.com)